



Noise Monitoring Result

Day Time (0700 - 1900hrs on normal weekdays)

Location: M1a - Harbour Road Sports Centre

Date	Time	Weather	Measurement Noise Level			Baseline Level	Construction Noise Level	Limit Level
			Leq	L10	L90	Leq	Leq	Leq
Unit: dB(A), (30-min)								
01/12/15	10:20	Cloudy	89.0	94.5	78.5	72	89	75
08/12/15	16:18	Cloudy	83.6	86.5	78.5	72	83	75
15/12/15	13:27	Fine	84.0	85.5	78.0	72	84	75
23/12/15	13:42	Fine	84.5	85.5	83.0	72	84	75

Location: M2b - Noon-day gun area

Date	Time	Weather	Measurement Noise Level			Baseline Level	Construction Noise Level	Limit Level
			Leq	L10	L90	Leq	Leq	Leq
Unit: dB(A), (30-min)								
01/12/15	13:00	Cloudy	69.6	70.5	67.5	68	65	75
11/12/15	14:05	Fine	68.8	70.0	66.0	68	63	75
14/12/15	10:17	Fine	69.3	70.0	67.0	68	64	75
21/12/15	10:20	Fine	68.5	70.0	66.5	68	61	75

Location: M3a - Tung Lo Wan Fire Station

Date	Time	Weather	Measurement Noise Level			Baseline Level	Construction Noise Level	Limit Level
			Leq	L10	L90	Leq	Leq	Leq
Unit: dB(A), (30-min)								
01/12/15	13:40	Cloudy	67.5	68.6	65.5	69	68	75
11/12/15	15:05	Fine	65.8	67.5	62.0	69	66	75
14/12/15	13:45	Fine	65.8	67.0	64.0	69	66	75
22/12/15	8:00	Fine	67.2	68.0	65.5	69	67	75

Location: M4b - Victoria Centre

Date	Time	Weather	Measurement Noise Level			Baseline Noise Level	Construction Noise Level	Limit Level
			Leq	L10	L90	Leq	Leq	Leq
Unit: dB(A), (30min)								
01/12/15	14:15	Cloudy	67.8	69.5	65.0	67	58	75
11/12/15	15:46	Fine	71.6	75.0	64.5	67	70	75
14/12/15	14:26	Fine	70.6	72.5	66.0	67	68	75
22/12/15	8:40	Fine	68.5	70.0	67.0	67	62	75

Location: M5b - City Garden

Date	Time	Weather	Measurement Noise Level			Baseline Level	Construction Noise Level	Limit Level
			Leq	L10	L90	Leq	Leq	Leq
Unit: dB(A), (30min)								
01/12/15	15:00	Cloudy	69.1	70.5	67.5	68	63	75
11/12/15	9:30	Fine	68.8	71.0	63.5	68	61	75
16/12/15	9:00	Fine	69.5	71.0	67.5	68	64	75
22/12/15	9:34	Fine	64.7	66.5	62.5	68	65	75

Location: M6 - HK Baptist Church Henrietta Secondary School

Date	Time	Weather	Measurement Noise Level			Baseline Level	Construction Noise Level	Limit Level
			Leq	L10	L90	Leq	Leq	Leq
Unit: dB(A), (30-min)								
01/12/15	15:37	Cloudy	70.9	72.0	68.0	71	57	70
11/12/15	10:05	Fine	68.4	69.5	66.5	71	68	65
16/12/15	9:40	Fine	68.5	69.5	67.0	71	69	65
22/12/15	10:16	Fine	69.1	70.0	67.0	71	69	70



Noise Monitoring Result

Day Time (0700 - 1900hrs on normal weekdays)

Location: M7e - International Finance Centre (Eastern End of Podium) (Reference Station)

Date	Time	Weather	Measurement Noise Level			Baseline Level	Construction Noise Level	Limit Level
			Leq	L10	L90	Leq	Leq	Leq
Unit: dB(A), (30-min)								
01/12/15	8:00	Cloudy	67.0	68.0	66.5	67	54	N/A
09/12/15	8:20	Cloudy	67.0	68.0	65.5	67	54	N/A
15/12/15	8:25	Fine	66.5	68.5	65.0	67	67	N/A
24/12/15	8:25	Fine	68.0	69.0	66.0	67	62	N/A

Location: M7w - International Finance Centre (Western End of Podium)

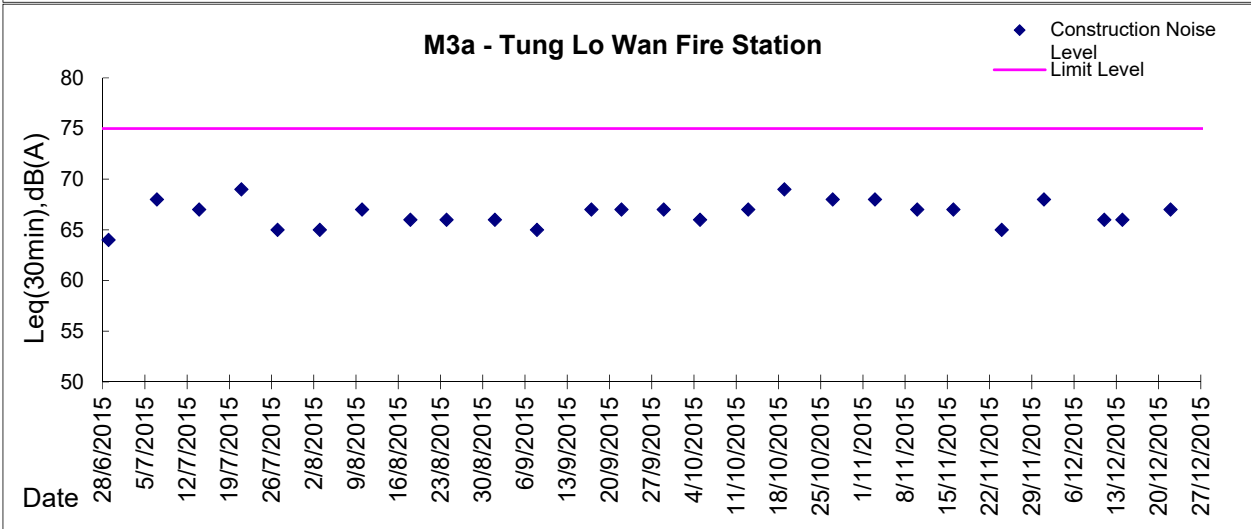
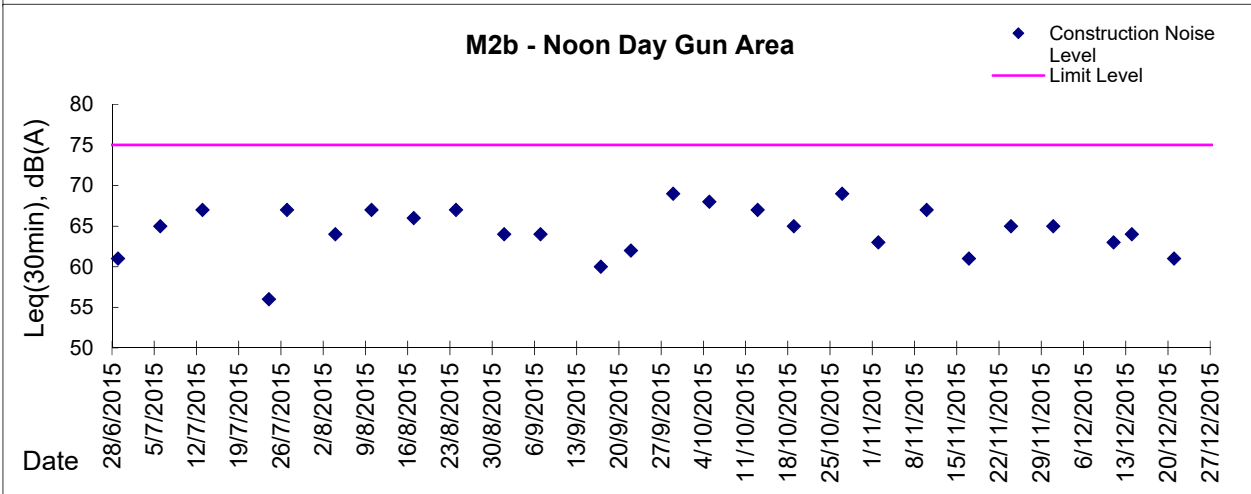
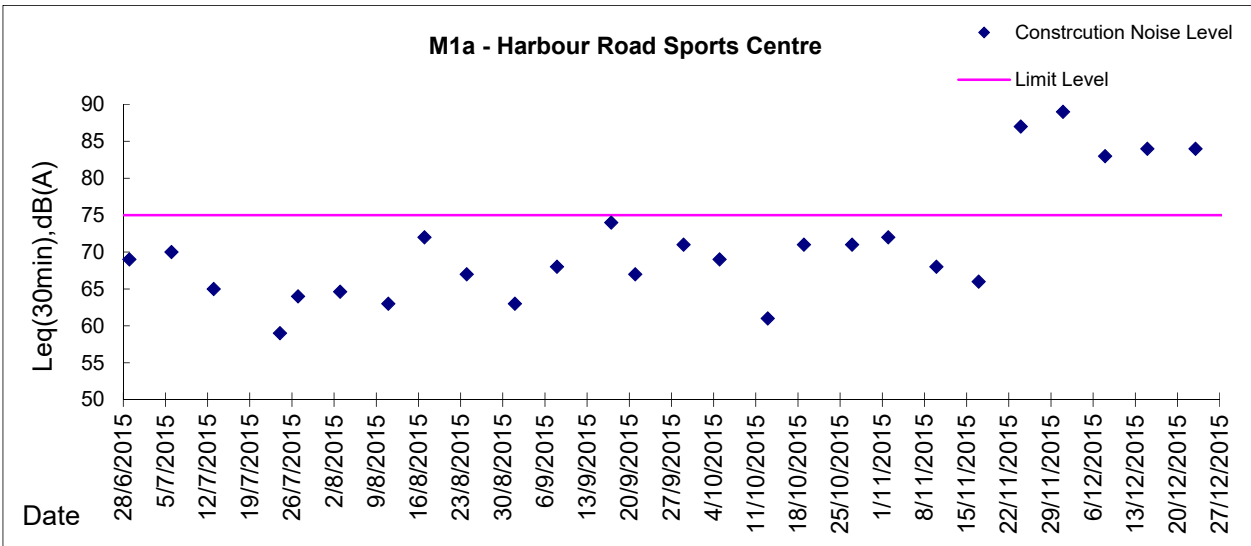
Date	Time	Weather	Measurement Noise Level			Baseline Level	Construction Noise Level	Limit Level
			Leq	L10	L90	Leq	Leq	Leq
Unit: dB(A), (30-min)								
01/12/15	8:33	Cloudy	66.5	67.5	65.0	69	67	75
09/12/15	9:21	Cloudy	66.5	68.0	64.0	69	67	75
15/12/15	9:30	Fine	65.0	66.0	64.0	69	65	75
24/12/15	9:30	Fine	66.0	67.5	64.5	69	66	75

Location: M8 - City Hall

Date	Time	Weather	Measurement Noise Level			Baseline Level	Construction Noise Level	Limit Level
			Leq	L10	L90	Leq	Leq	Leq
Unit: dB(A), (30-min)								
01/12/15	9:15	Cloudy	64.0	66.5	59.5	64	64	70
08/12/15	15:32	Cloudy	61.6	63.0	57.5	64	62	70
15/12/15	10:20	Fine	64.5	66.0	63.0	64	55	70
24/12/15	10:30	Fine	64.0	65.0	63.0	64	64	70



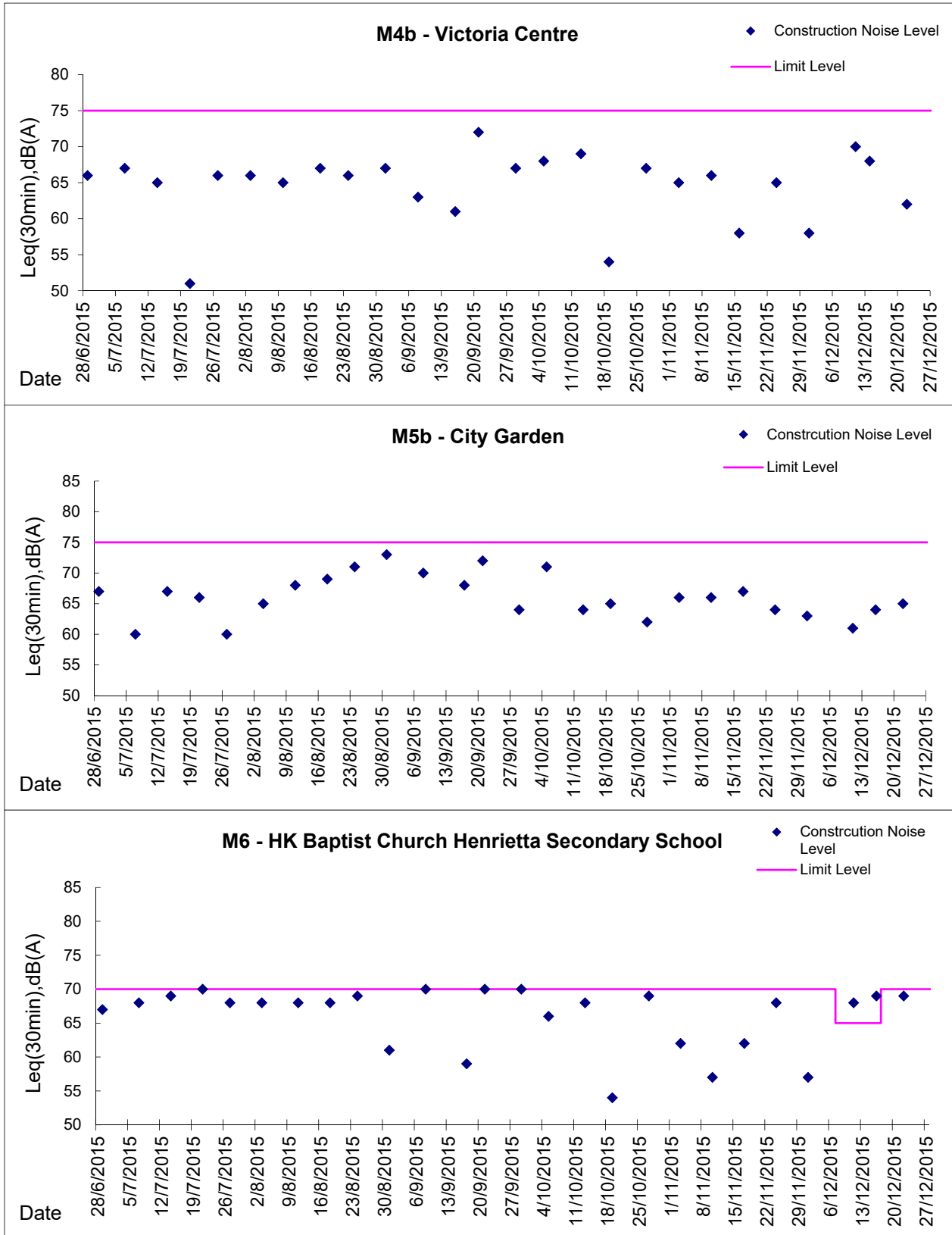
Graphic Presentation of Noise Monitoring Result
Day Time (0700 - 1900hrs on normal weekdays)





Graphic Presentation of Noise Monitoring Result

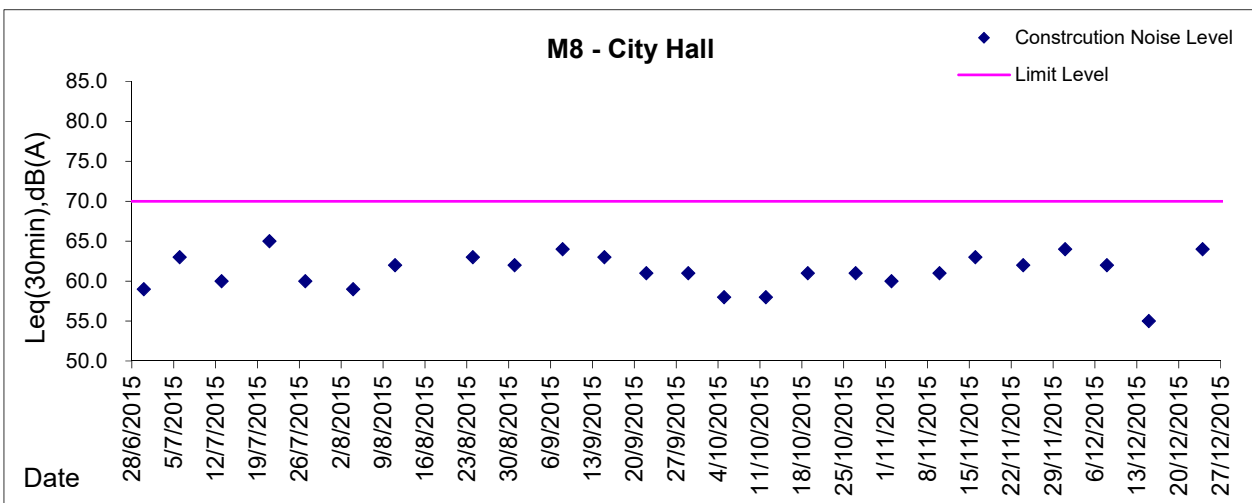
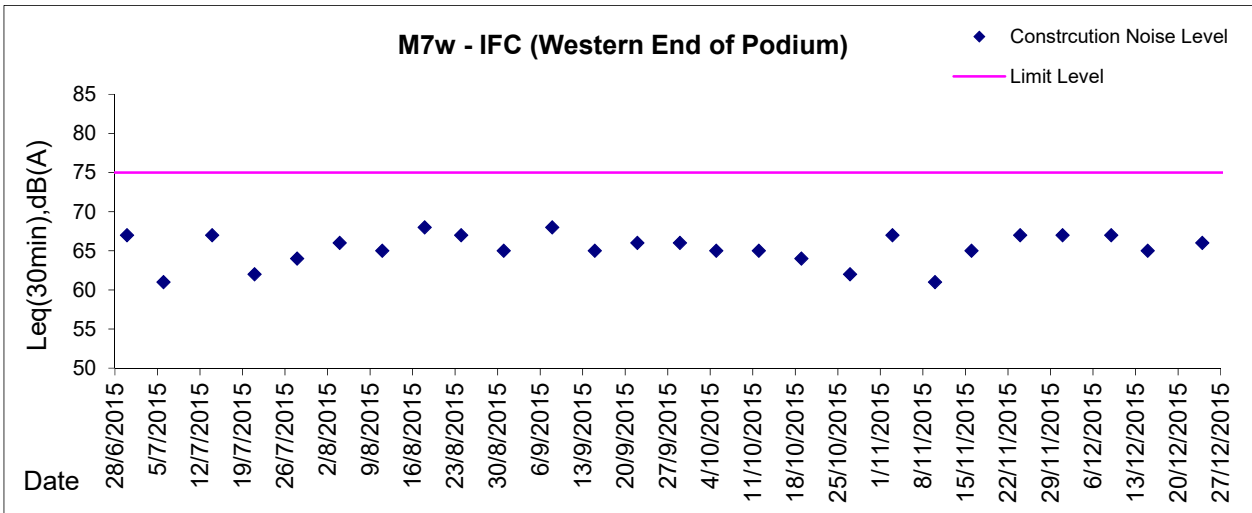
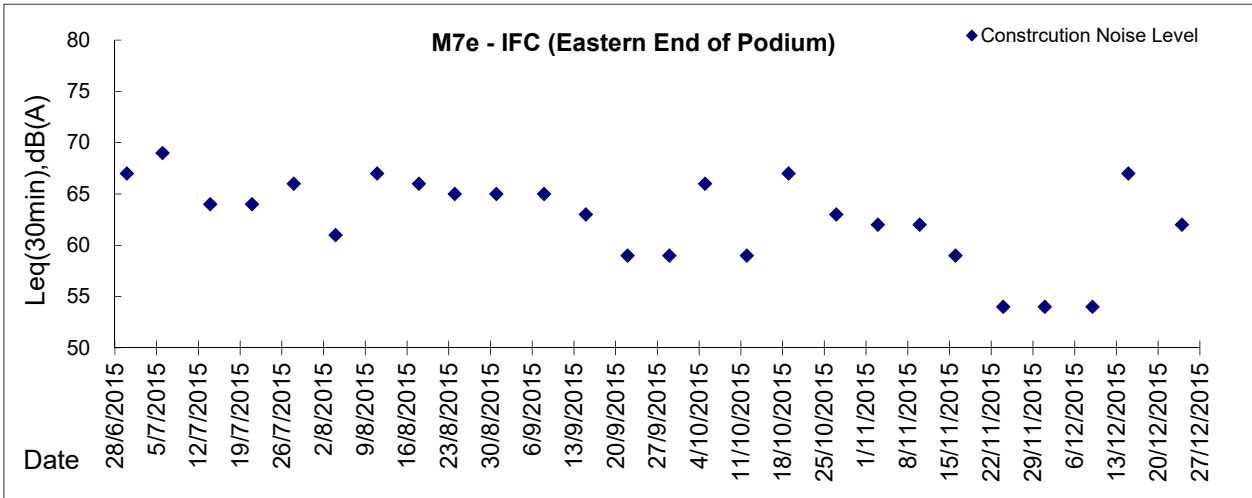
Day Time (0700 - 1900hrs on normal weekdays)





Graphic Presentation of Noise Monitoring Result

Day Time (0700 - 1900hrs on normal weekdays)



* Remark: M7e - IFC (Eastern End of Podium) is a reference monitoring station